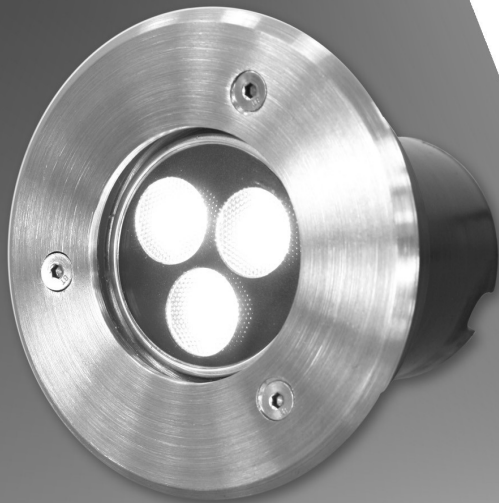




User Manual

Contents

Safety Information	3
Technical Information	4
Main Power & Signal Connection	5
Rigging the Fixture	7
Cleaning & Maintenance	7
Parts List	7



MEGA **LITE**

Check that the unit has not been damaged during transport



Read all cautions and warnings
prior to operation of this
equipment

Caution!

Read entire manual before connecting units

Protection Against Fire



Fire

1. Maintain a minimum of 1 foot distance from any type of flame.
2. Do Not install the unit too close to a heat source.
3. Make sure cable is properly secured away from unit heat sinks.
4. Do Not submerge cable past cable connection.
5. Do Not open unit and re-submerge.

Protection Against Electrical Injury



Electrical

1. Disconnect power before LED replacement or servicing.
2. This unit must be earthed. (electronically grounded)

Protection Against Mechanical Hazards



Mechanical

1. Use safety chain when hanging unit.
2. Use quality clamps or bolts when positioning unit.
3. Units are hot, Do not touch when they are on.
4. Do not open unit risk of electrical shock.
5. Do not open unit and re-submerge.

Specifications

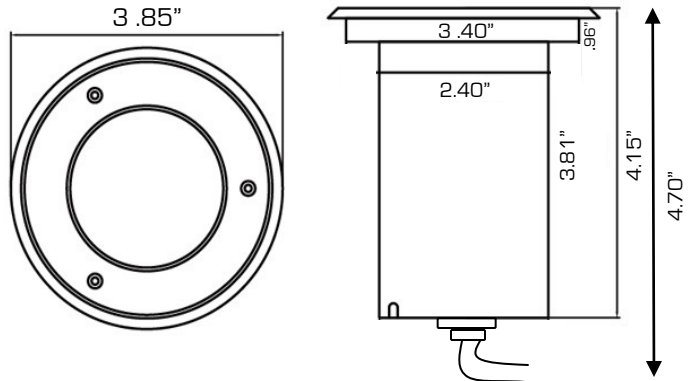
Part Numbers

Fixture

4235- Dream Beam In-Ground

Mechanical Specifications

Housing: Stainless Steel & plastic
 Connection: Cable mounted Cat 5 head
 IP Rating: IP 67
 Accessories: Cat 5 Splitter (included)
 Cat 5 cable 5 meter (included)



Fixture	Packaged for Shipping
Size: 4.05" x 5.65" x 3.26"	Size: 8.25"L x 4"W x 4"H
Weight: 1.6lbs	Weight: 2.8 lbs

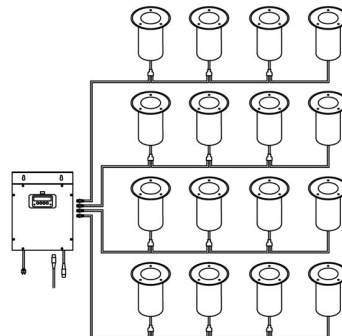
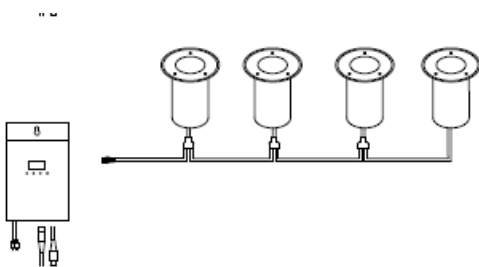
LED Specifications

LED Quantity: 3
 LED Type: Tri Color R,G,B
 LED Watts: 3 Watts each
 LED Lifetime: 50 to 100 thousand hours
 LED Angle: 45° (± 5°)

Control

Dream Drive can control 4 Dream Beam In Ground.

Dream Drive Quad can control 16 Dream Beam In Ground 4 per zone



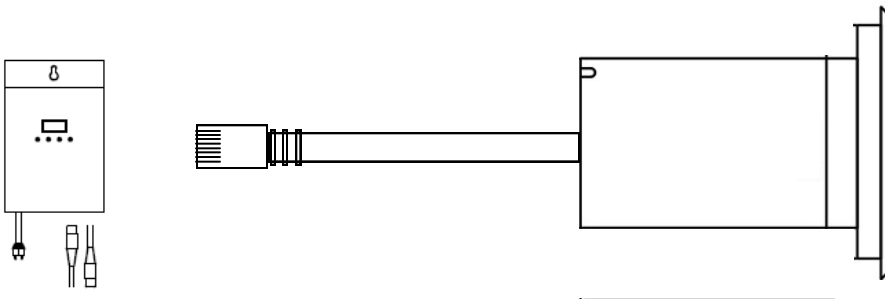
Main Power & Signal Connection

Caution!

1. Do not connect fixture to a dimmer system.
2. This unit must be earthed. [electronically grounded]

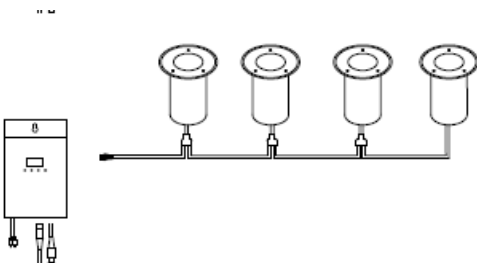
Single Unit Connection Using Dream Driver

Connect Dream Beam In Ground connection to side of Dream Driver panel mount connection



Multiple Unit Connection Using Dream Driver

Using the Cat 5 cable (included in package)
Connect from the output of the Dream Driver to the input marked on the Dream Beam Splitter (included in package). From the Out 1 on the Dream Driver Splitter you can connect to your Dream Beam In Ground. From the Out 2 you can connect the following Dream Beam In-Ground repeating the process up to 4 times. Do not connect more than 4 units to the dream driver

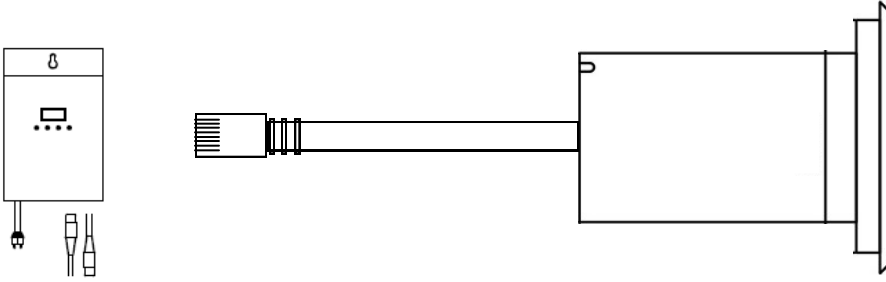


Caution!

1. Do not connect more than 4 Dream Beam In Ground units to the Dream Driver
2. Cable length must not exceed 150 feet total from Dream Driver to the final unit

Single Unit Connection Using Dream Driver Quad

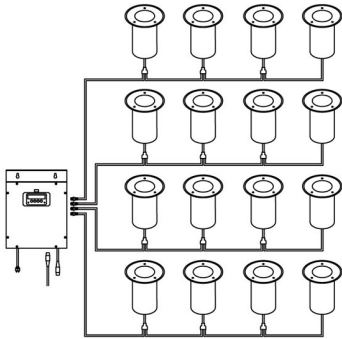
Connect Dream Beam In Ground connection to side of Dream Driver Quad panel mount connection



Multiple Unit Connection Using Dream Driver Quad

Using the Cat 5 cable (included in package)

Connect from the output of the Dream Driver Quad to the input marked on the Dream Beam Splitter (included in package). From the Out 1 on the Dream Driver Splitter you can connect to your Dream Beam In Ground. From the Out 2 you can connect the following Dream Beam In Ground repeating the process up to 4 times per zone. Do not connect more than 4 units to the Dream Driver Quad per zone.



Caution!

1. Do not connect more than 4 Dream Beam In Ground units per zone output
2. Cable length must not exceed 150 feet total from Dream Driver Quad to the final unit per zone

Rigging the fixture

Caution!

1. The installations must be carried out by an authorized dealer or trained professional.
2. Unit may cause severe injuries if you have doubts concerning the safety do not install.
3. Unit is to be 24 inches away from flammable materials (decoration material)
4. Use high quality installation equipment to hang unit.

When rigging a unit it is very important that you follow common safety procedures. Rigging requires extensive experience including but not limited to calculating working loads, material being used and periodic safety inspections. If you lack these qualifications, do not attempt the installation yourself, instead use a professional structural rigger.

When rigging the unit always be secured with a secondary safety attachment. The installation location of the projector must be built in the way that it can hold 10 times the weight for 1 hour with out any harming. Installation should be checked at least one time a year by a skilled person.

Cleaning and maintenance

Installation Maintenance: The operator has to make sure that the unit is operating safely and has the installations and electronics checked by an expert every 2 years.

The following points have to be considered during the inspection:

- 1) All screws used for installing the device or part of the device have to be tightly connected and must not be corroded.
- 2) The Cat 5 cables must not show any damages, material fatigue (e.g. porous cables) or sediments. Further instructions depending on the installation spot and usage have to be adhered by a skilled installer and any safety problems have to be removed.

Replacing the Cat 5 cable: If the power cable of this device becomes damaged, it has to be replaced by authorized dealers only in order to avoid hazards. If seal is broken the fixture repairs must be carried out at Mega-Lite to insure proper re-seal.

Parts List

Item Number	Description
4232-LEDC	LED card
4232-LEDT	Tri Chip LED
4235-Yoke	Mounting Yoke
4230-5mCable	Cat 5 Cable
4230-Splitter	Dream Beam Splitter
4232-Lens	Dream Beam 30° lens kit



Mega-Lite
5718 Kenwick St
San Antonio, TX 78238
Ph 210-684-2600 Fax 210-855-6279
www.mega-lite.com / info@mega-lite.com